

Health Check-ups



Contact Details:

VPS Enterprise

Mo.No. 9819652619/9975888958

e-mail:- vpsent2023@gmail.com

vps
Enterprise



HealthSure

**Comprehensive Digital Health Solution
For Healthier Communities**

Next-Gen User Centric Healthcare Network





Access your **HealthData** in 10 Minutes
before **Doctor** Consultation



Test Parameters

GENERAL BODY CHECKUP (16)



Height	Bone Mass	Systolic BP
Weight	Muscle Mass	Diastolic BP
Body Mass Index	Visceral Fat	Pulse Rate
Hydration	Metabolic Age	Oxygen Saturation
Fat%	Muscle Quality Score	Temperature
Basal Metabolic Rating		

LIFESTYLE CHECKUP (5)

Blood Sugar
(Fasting Sugar,
Random Sugar
Post Prandial Sugar)
Hemoglobin
HbA1c



URINE TESTS (10)



Glucose	PH
Bilirubin	Protein
Ketone	Urobilinogen
Specific Gravity	Nitrite
Blood	Leukocytes

12 Lead ECG
Lipid Profile
(Total Cholesterol
High-Density Lipoprotein
Low-Density Lipoprotein)

Triglycerides
Non-HDL
HDL Ratio)



TELE-CONSULTATION (3)



Digital Stethoscope

Digital Otoscope

Digital Dermoscope

RAPID DIAGNOSTIC CHECKUP (20)



Pregnancy
HIV I & II
Malaria
Dengue
Chikungunya

Leptosira
Filariasis
Scrub Typhus
Hepatitis A
Typhoid

S.Typhi/Paratyphi Ag
Helicobacter Pylori
Troponin
Covid - 19 Ag
Fecal Occult Blood

TORCH Panel
(Toxoplasmosis
Rubella
Cytomegalovirus
HSV-1
HSV-2



ADDITIONAL ADVANCED CHECKUP (29)



Lung Function Test
Fetal Heart Rate
Eye Checkup
Hearing Checkup
OAE
Alcohol Breath Analyser
Stress Assessment
Oral Checkup

WBC
(Total Leukocyte Count
Neutrophils
Lymphocytes
Monocytes
Eosinophils
Basophils)

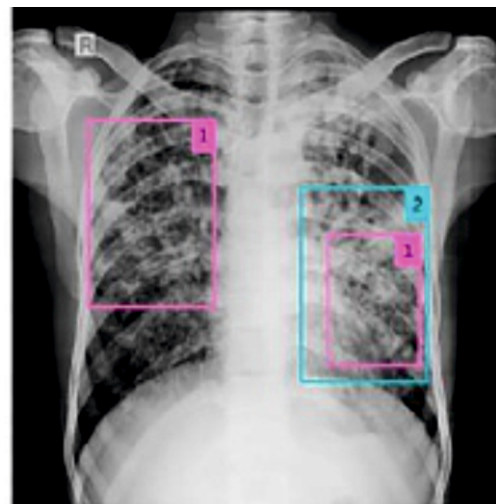


CRP
PCT
RSV Ag
Strep A Ag
S. Pneumonia Ag
hs CRP
CK MB
NT proBNP

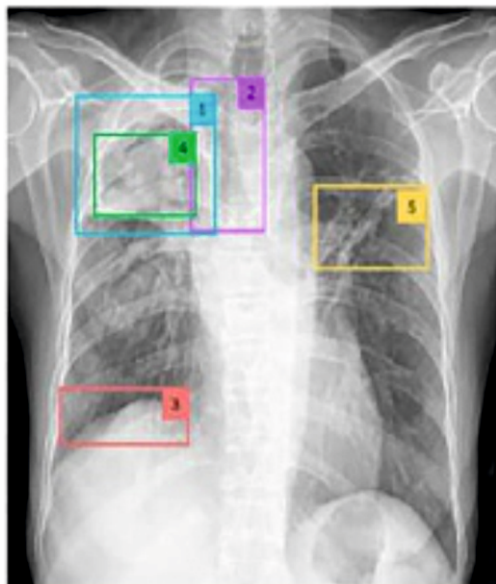
D Dimer
Beta - hCG
LH
TSH (Serum)
T4
fT4
TSH WB



Prompt: Identifying following pathologies in given Chest X-Ray (consolidation, Nodules, Blunting of CP Angle, Lobe collapse, deviation of trachea, migration of diaphragm, cavity, reticular fibrotic changes)



Numerous **nodular opacities** of varying sizes in both lungs, Consolidatory changes with **air bronchograms** Indicates active infective aetiology.



Collapse of right upper lobe
Rightward **deviation of trachea**
Cranial **migration of right hemidiaphragm** **Cavity** and **Reticular fibrotic changes** Indicates Old Pulmonary Tuberculosis.

About HealthATM



HealthATM" is an aggregation of US FDA/ EU CE/CDSCO certified medical lot devices combined with HIPAA compliant software backend.

It enables Paramedical professionals to diagnose several health parameters and diseases, solving the problem of primary health service in rural/remote areas.

It is also a cloud connected platform that enables Tele-Consultation. Integrated Doctor consultation platform with doctor login and patient management.

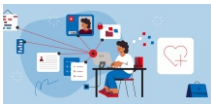
High-resolution Camera and Touch screen.

More than 60 parameters checked in a few minutes.

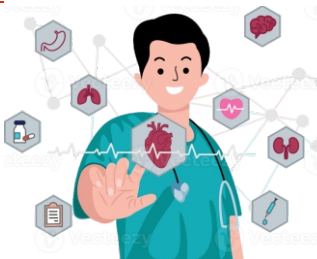
ABDM Compliance to create ABHA IDS

Several AI-enabled health check-up

Solution (Coming soon).



Digital Health Record



Instant Diagnostic & Results



Live Doctor Consultation

Health Bag



X-Ray Detector Panel



Portabla/Handheld X-Ray



About HealthBAG

HealthBAG is a portable health solution containing various IoT-enabled medical devices for comprehensive diagnostics.

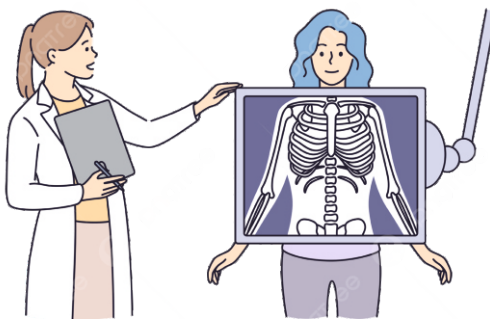
It enables healthcare providers to perform non-invasive and invasive tests, covering essential metrics like blood pressure, blood glucose, oxygen saturation, body composition, hemoglobin, HbA1c etc.

This device is HIPAA-compliant, cloud-connected and can be used in remote or underserved areas, providing easy access to teleconsultation with real-time test results and instant prescriptions.

Its design allows for door-to-door health screenings, making it ideal for mobile healthcare services in hard-to-reach locations.



About Digital Portable X-Ray



The Digital Portable X-ray with Artificial Intelligence (AI) is an innovative, cutting-edge solution designed to revolutionize diagnostic imaging. This advanced medical device combines the convenience of portability with the power of AI, enabling healthcare providers to deliver precise, efficient and rapid diagnoses directly at the point of care.



Portability

Lightweight and transportable for use in hospitals, clinics, field settings, and home care.



AI-Powered Analysis

Assists in detecting anomalies, enhancing image quality, and providing real-time analysis



High-Quality Imaging

Delivers high-resolution images with advanced sensors and processing.



Efficiency and Speed

Speeds up image acquisition and interpretation for faster diagnoses.



User-Friendly Interface

Simple controls suitable for all levels of medical professionals.

Why Choose This Technology?

With the integration of AI, healthcare professionals can significantly enhance diagnostic accuracy and improve patient outcomes. The portable design ensures flexibility and accessibility, breaking barriers to medical imaging in challenging locations. Embrace this innovative solution to deliver better, faster and more reliable healthcare services.